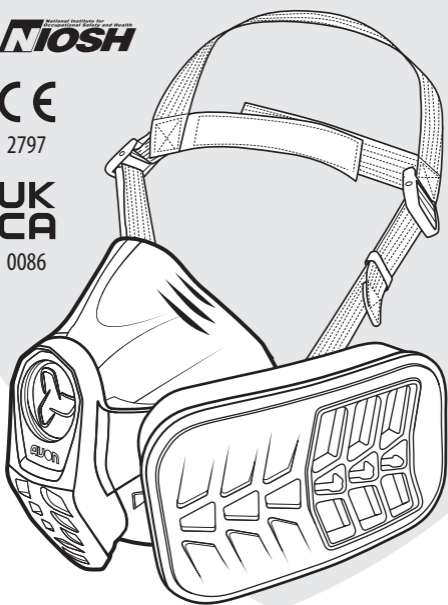


# AVON PROTECTION



## MITR™ -M1

MODULAR INTEGRATED TACTICAL  
RESPIRATOR

### USER INSTRUCTIONS

#### MITR™ -M1 USER INSTRUCTIONS

##### TYPE-EXAMINATION APPROVAL

PPE Regulation (EU) 2016/425  
EU type-examination - Module B (annex V)  
Product conformity to Type - Module D (Annex VIII)  
BSI Group, NB No. 2797, The Netherlands B.V. John M. Keynesplein 9,  
1066 EP, Amsterdam, Nederland



##### UKCA MARKING APPROVAL

Regulation (EU) 2016/425 on personal protective equipment as brought into  
UK law and amended, UKCA marking approval: BSI Assurance Ltd., AB No. 0086,  
Kitemark House, Davy Avenue, Knowlhill, Milton Keynes, Bucks, MK4 8PP



NIOSH-Certified - See NIOSH approval label insert.

CE/UKCA:  
EN140:1998

##### SYMBOLS



Not for use by  
children under  
16 years



<19.5%

Do not use in  
oxygen deficient  
atmospheres  
(<19.5%)



Do not use for  
escape from  
smoke or fire



WARNING: Failure to carry out regular  
care and maintenance checks may  
result in serious injury or death



Read instructions and  
undergo training before  
attempting to use device

##### GENERAL NOTES

The MITR-M1 half mask is NIOSH approved, see NIOSH Approval Label for approved configurations. Before occupational use of this respirator, a written respiratory protection program must be implemented meeting all the local government requirements. In the United States, employers must comply with OSHA 29 CFR 1910.134 which includes medical evaluation, training, and fit testing. The MITR-M1 half mask will perform as designed only if stored, donned and used according to these instructions. Failure to follow these instructions may lead to serious injury or death. Warranties made by Avon Protection are voided if the MITR-M1 half mask is not stored, checked and used in accordance with these instructions.

The MITR-M1 half mask is a three size product: Small (S), Medium (M) and Large (L). Store the MITR-M1 half mask in dry, clean conditions and away from direct sunlight. Do not place under heavy objects and avoid prolonged storage periods at extreme temperatures.

The MITR-M1 half mask respirator has a recommended operational range of -25°F to +120°F (-32°C to +49°C), the environmental temperature range in which the product has been demonstrated to remain functional for the wearer.

##### FILTER CARTRIDGE SELECTION, CONFIGURATION & INSTALLATION

Please see the user instructions provided with your MITR filter cartridge.



##### PRE USE CHECK PROCEDURES & INSPECTIONS

The MITR-M1 half mask must be periodically checked to ensure it will perform as designed. Do not use if the product is damaged or contaminated, bring to the attention of your local safety representative immediately. Failure to carry out regular care and maintenance checks may result in serious injury or death. Visually inspect to ensure that there are no cuts, tears, cracks, contamination, or other damage to the product. Check that the harness is not twisted, the front cover is securely in position, the filter cartridge and blanking plug have been correctly attached. Prior to initial donning, ensure temple buckles are unlocked and straps are sufficiently extended. Wearers must always conduct a negative pressure check prior to use to make sure the half mask will seal to the face. Wearers are advised to conduct a quantitative fit test, at least annually, to confirm the correct respirator size continues to be appropriate.

Continued overleaf...

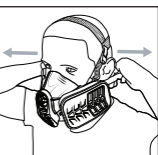
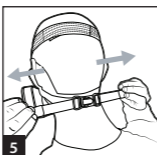
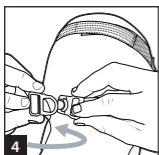
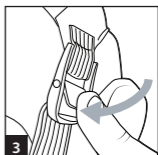
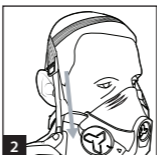
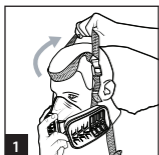


WARNING

**DONNING**

Place your chin into the chin cup of the half mask first and then position onto your face pulling the head harness straps over your head. Using the tabs, pull harness straps evenly through buckles until the head harness is firm but comfortable, the harness buckles should then be clipped/locked into position. Adjust hook and loop straps to ensure harness sits comfortably on your head. Clip the neck clasps together around the back of your neck, ensuring they are not twisted. Pull neck straps evenly until firm, but comfortable. Make final adjustments to ensure mask is correctly positioned and comfortable on face. Ensure head harness, long hair or jewelry are not in a position to interfere with the face seal.

Note: For subsequent donning, the harness buckles and hook and loop fastening do not require readjustment (steps 2 & 3). Carry out a successful negative pressure check.

**CARRY OUT A SUCCESSFUL NEGATIVE PRESSURE CHECK**

Place palm of hand over filter cartridge inlet and gently inhale. The mask should collapse on face. Hold breath for 5 seconds. Mask should remain collapsed. If you are unable to achieve a fit, try readjusting and repeat. If test fails, the product may need maintenance or another size of product may be required. Do not use until this test has been passed.

**DOFFING**


Unclip the neck clasp. Without loosening the pre-positioned head harness straps, grasp the front of the mask, pull forward and lift up back over head. After being cleaned, the mask can be placed in cargo pockets, gear pouches or kit bags.

**CLEANING**

The MITR-M1 half mask must be cleaned after each use. The mask should be cleaned with a lint free cloth and warm soapy water. The filter cartridge must be removed before cleaning the mask. For a deep clean, the head harness, front cover and valves should be removed for washing. Ensure all items are rinsed with clean water and air dried at room temperature. Care should be taken to ensure that the inhalation/exhalation valves are not damaged, distorted and are free from debris. Refit/replace removed components as required only when the MITR-M1 half mask is completely dry. Following reassembly, a negative pressure test must be conducted. Sanitizing the MITR-M1 half mask can be completed by use of a sanitizing/disinfecting solution. DO NOT exceed the manufacturers dilution instructions.

**WARNINGS**

- DO NOT use boiling hot water to clean as this may result in damage to the product. Warm water is sufficient.
- DO NOT use tissue paper or a paper towel to remove dirt or moisture from front module cover, outlet valve, or outlet valve seat. Paper may break up and lodge in outlet valve area causing leakage.
- Cleaning correctly is vital for maintaining its effectiveness in providing the maximum level of protection.
- DO NOT use detergent, spirit, solvent cleaner or any product containing chlorine (bleach).
- Ensure product is completely dry after cleaning or sanitizing and prior to storage, failure to comply may encourage the growth of mould and mildew.
- Failure to store the half mask correctly may cause deformation of the faceseal, resulting in an inadequate seal to the users face and the increased possibility of serious injury or death.
- Ensure there are no cuts or tears in the internal or external rubber components, no chips or cracks in the plastic components.
- Ensure inlet/outlet valves are clean and free from debris or dirt, and are not damaged or deformed.
- Ensure the head harness straps are correctly adjusted and not twisted, that there is no damage to the fittings/buckles and that they are securely attached to the MITR-M1 facepiece.
- Ensure the LH/RH blanking plug is secured into the corresponding filter cartridge mount (as required).
- Ensure the utility port blanking plug is fitted securely.
- The MITR-M1 half mask is not intended for use in any environment where it may come into contact with direct flame.
- Do not remove the half mask from your face until you have left the contaminated area.
- Gaps in the face seal due to facial hair or jewelry will likely result in the wearer breathing contaminants which may result in sickness, serious injury or death.
- Users of the MITR-M1 half mask must be clean shaven to ensure a seal between the product and the users face.

50°F (10°C)  86°F (30°C)  
STORE BETWEEN 50°F TO 86°F (10°C TO 30°C)



DO NOT USE FOR ESCAPE FROM SMOKE OR FIRE



SEE PRODUCT/PACKAGE FOR DATE OF MANUFACTURE



<80%  
STORE AT <80% RELATIVE HUMIDITY



SEE PRODUCT/PACKAGE FOR SHELF LIFE

**REPLACEMENT PARTS**

Only Avon Protection approved parts must be used. Do not attempt to alter any parts of the mask or filter cartridge.

**DISPOSAL**

Disposal of the MITR-M1 half mask and filter cartridge must be undertaken as required by federal, state and/or local laws.

**CONTACT INFORMATION**

In the event of a product concern, please contact your authorized distributor or Avon Protection, who will provide the information for issue resolution. These User Instructions can also be downloaded from our website by scanning the QR code below.

**EMEA**

Avon Polymer Products Ltd., Hampton Park West, Melksham, Wiltshire UK SN12 6NB.  
Tel: +44 (0) 1225 896 705.

**The Americas**

Avon Protection, 503 Eighth St., Cadillac, Michigan USA 49601.  
Tel: +1 888 286 6440.

**[www.avon-protection.com/contact](http://www.avon-protection.com/contact)**

Both the EU Declaration of Conformity and UKCA Declaration of Conformity are available at:  
[www.avon-protection.com/certifications.htm](http://www.avon-protection.com/certifications.htm)

Copyright © 2025 Avon Protection. All rights reserved. GR06148-01 / PN: 608578



Scan the QR code to register this product for warranty and to access additional MITR resources.

**AVON**  
PROTECTION